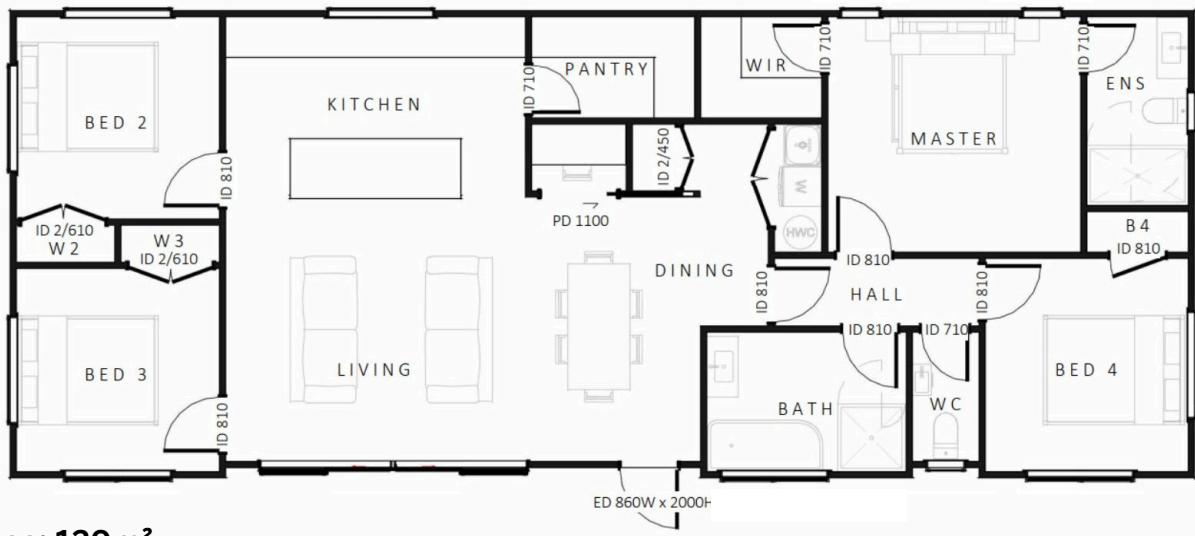




The Rimu design packs exceptional functionality and style into a smart 120sqm footprint. Featuring 4 bedrooms, 2 bathrooms, a scullery, walk-in wardrobe, study nook, separate toilet, and high ceilings, this home has been thoughtfully designed to maximise every square metre.

Beautifully crafted with luxury living in mind, the Rimu combines contemporary design with practical everyday living. Spacious, functional, and full of thoughtful details, this home delivers everything a modern family needs, without compromise.



Floor Area: 120m²



Contact us:

Ph: 07 847 3440
 E: sales@kdh.co.nz
 www.kdh.co.nz

